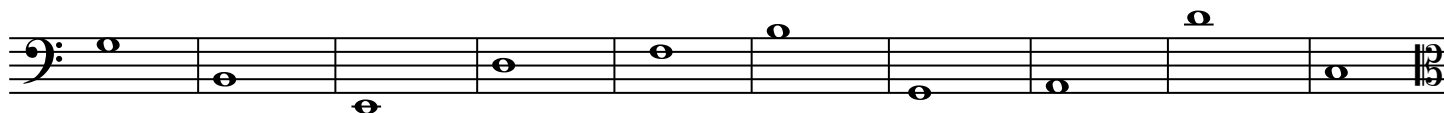
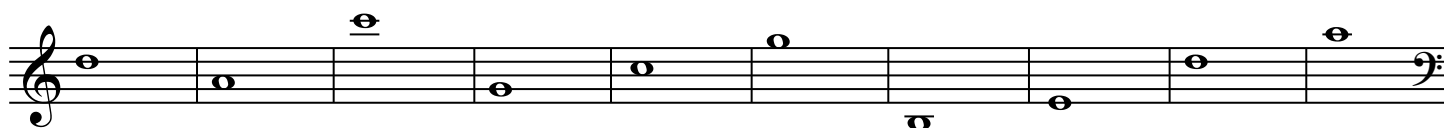


CCPA Fundamentals Proficiency Exam

Practice Module 1: Note Reading

Beneath each line of notation, supply the letter names only for the notated pitches.



Important: When this test is given during your audition, you will be required to complete this module in 5 minutes.

CCPA Fundamentals Proficiency Exam

Practice Module 3: Minor Scales/Keys

I. Write the following scales *using accidentals, not key signatures*.



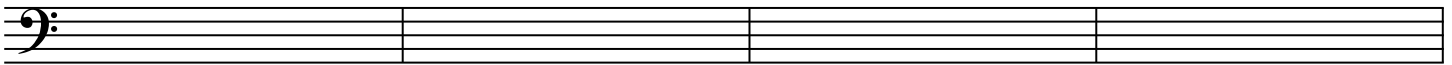
F-sharp harmonic minor

E-flat natural minor



D melodic minor (ascending and descending)

II. Supply the correct key signature for the given key.



B minor

F minor

C-sharp minor

B-flat minor

III. Identify the following minor key signatures.



IV. Complete each statement by supplying either a pitch name or scale degree (scale step).

1. A is scale degree _____ in F-sharp natural minor 2. B-flat is scale degree 5 in _____ minor

3. _____ is scale degree 4 in F minor 4. _____ is scale degree 6 in D-natural minor

Important: When this test is given during your audition, you will be required to complete this module in 10 minutes.

CCPA Fundamentals Proficiency Exam

Practice Module 4: Intervals

I. Notate the requested interval.

The exercise below uses the following abbreviations:

M = major m = minor o = diminished + = augmented

A musical staff with a treble clef and a key signature of one sharp (F#). It contains eight intervals, each represented by a pair of notes: m3 up (C4 to E4), P5 down (C4 to G3), m6 up (C4 to A3), M7 down (C4 to B3), M3 up (C4 to E4), o4 down (C4 to F#3), m2 up (C4 to D4), and M3 down (C4 to B3).

m3↑ P5↓ m6↑ M7↓ M3↑ o4↓ m2↑ M3↓

A musical staff with a treble clef and a key signature of one sharp (F#). It contains eight intervals, each represented by a pair of notes: +4 up (C4 to F#4), P5 down (C4 to G3), m6 up (C4 to A3), M7 down (C4 to B3), o7 up (C4 to G#4), P4 down (C4 to F#3), m2 up (C4 to D4), and M3 down (C4 to B3).

+4↑ P5↓ m6↑ M7↓ o7↑ P4↓ m2↑ M3↓

II. Name the size and quality of each interval. Be sure you include both a modifier AND a number
Use the the following abbreviation for the modifiers:

M = major m = minor o = diminished + = augmented

BE SURE TO MAKE A CLEAR DIFFERENCE BETWEEN UPPER AND LOWER CASE LETTERS.

A musical staff with a treble clef and a key signature of one sharp (F#). It contains five intervals for identification: C4 to E4 (major 3rd), C4 to G3 (perfect 5th), C4 to A3 (minor 6th), C4 to B3 (major 7th), and C4 to D4 (minor 2nd).

A musical staff with a bass clef and a key signature of one sharp (F#). It contains five intervals for identification: C3 to E3 (major 3rd), C3 to G2 (perfect 5th), C3 to A2 (minor 6th), C3 to B2 (major 7th), and C3 to D3 (minor 2nd).

Important: When this test is given during your audition, you will be required to complete this module in 10 minutes.

CCPA Fundamentals Proficiency Exam

Practice Module 5: Triads

I. Identify the following triads with the following abbreviations:

M = major m = minor o = diminished + = augmented

BE SURE TO MAKE A CLEAR DIFFERENCE BETWEEN UPPER AND LOWER CASE LETTERS.

II. Write the following triads using the given note as the root.

M m M + o

m M + m m

Important: When this test is given during your audition, you will be required to complete this module in 10 minutes.