

Error:

Java Application Blocked; Application Blocked by Java Security

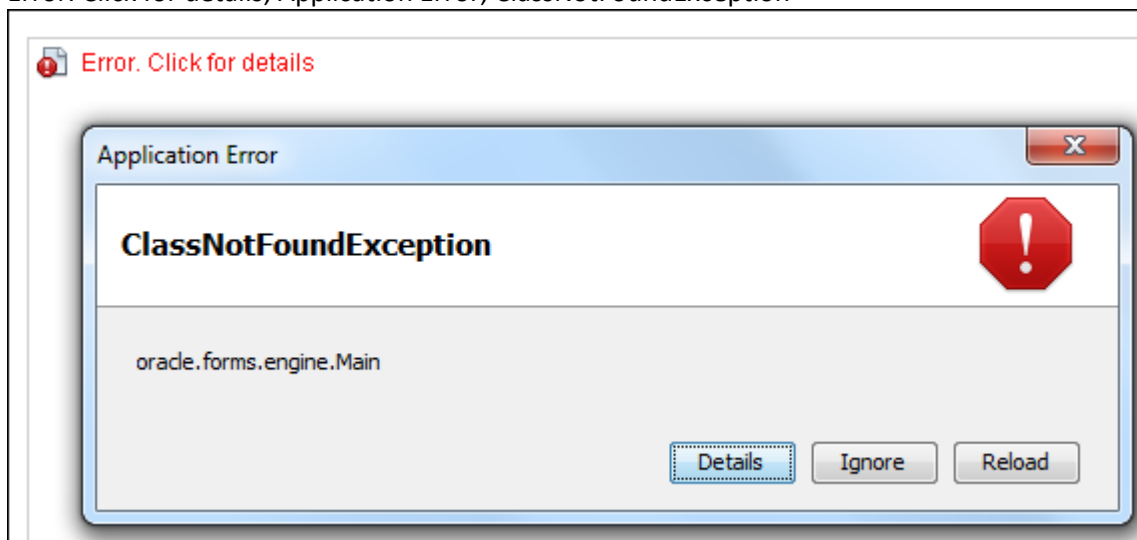


Resolution:

1. In Windows, go to Start, search for and open **Configure Java**
2. In the **Java Control Panel**, go to the **Security** tab
3. At the bottom of that page click **Edit Site List**
4. Click **Add**. In the **Exception Site List** Location type or paste the Banner PROD url:
`https://svwinb01.roosevelt.edu/forms/frmservlet?config=prodjpi`
5. Click **OK** to save changes made to the Java Control Panel
6. Click **OK** again to exit
7. Close Internet Explorer, reopen Internet Explorer, and reopen Banner.

Error:

Error. Click for details; Application Error; ClassNotFoundException



Resolution:

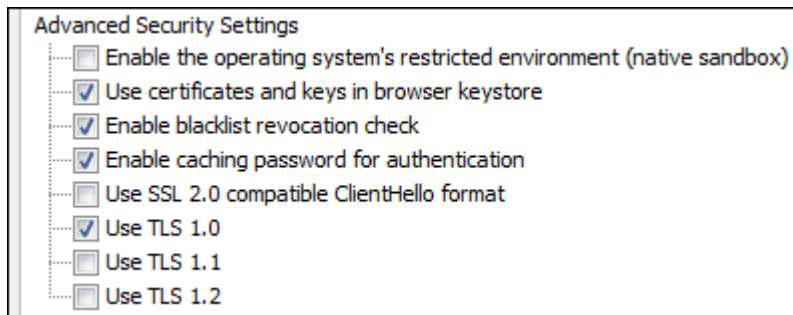
In Windows, go to Start, search for and open **Configure Java**

In the **Java Control Panel**, on the **General** tab, click **About...** to determine Java version



For **Version 8 Update 51** and above

1. Go to **Advanced** tab, scroll down to **Advanced Security Settings**
2. Uncheck "Use SSL 2.0 compatible ClientHello format"
3. Check "Use TLS 1.0"
4. Uncheck "Use TLS 1.1"
5. Uncheck "Use TLS 1.2"



6. Click **OK** to exit.
7. Close Internet Explorer, reopen Internet Explorer, and reopen Banner.

For **Version 8 Update 45** and below

1. Go to **Advanced** tab, scroll down to **Advanced Security Settings**.
2. Check "Use SSL 2.0 compatible ClientHello format".
3. Click **OK** to exit.
4. Close Internet Explorer, reopen Internet Explorer, and reopen Banner.